



*Experience the best*

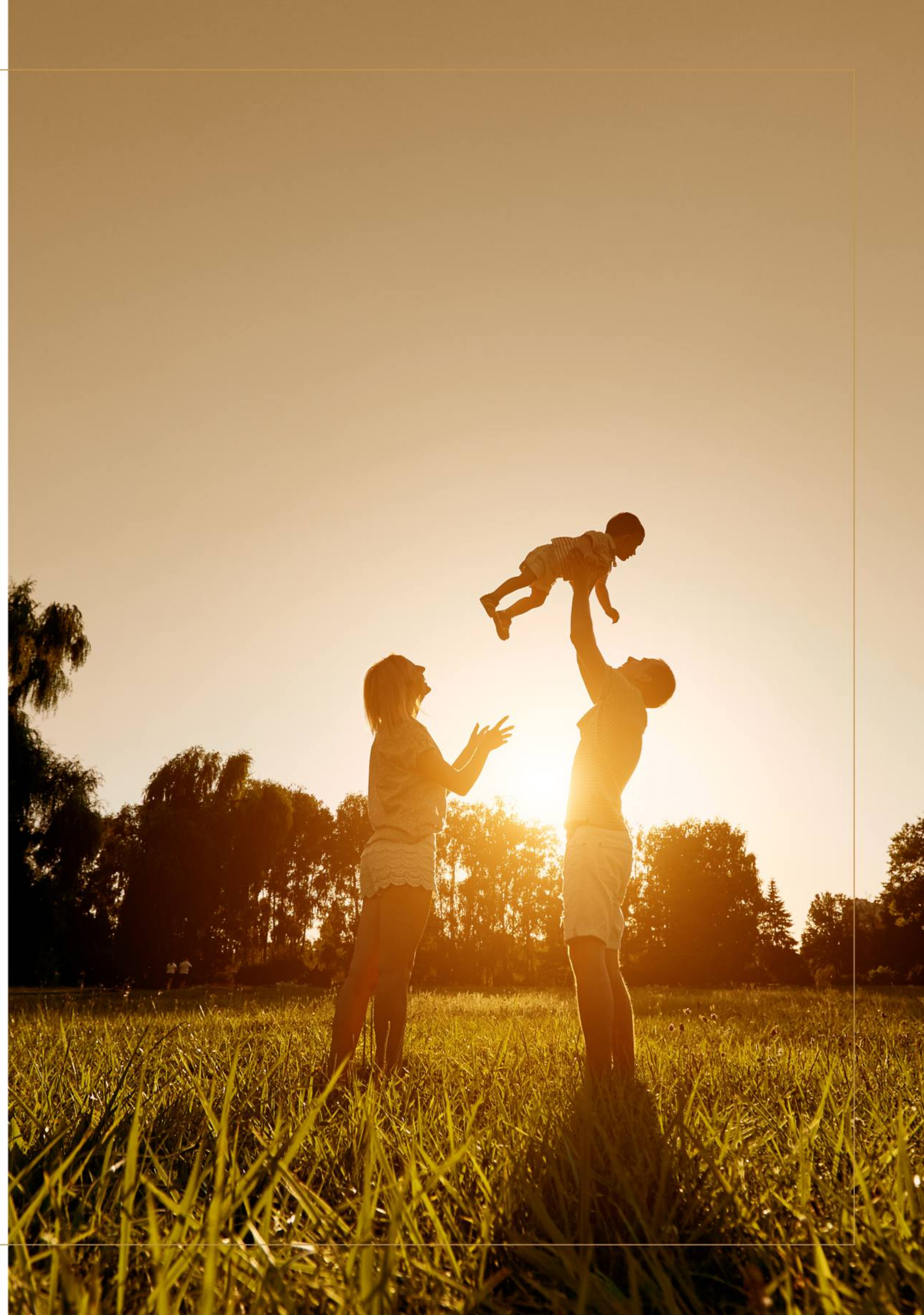


EMERALD SCENIC VIEWS  
GRAND NEO-CLASSICAL ARCHITECTURE  
2 / 3 / 4 BHK APARTMENTS



### *The sunlight of your life*

In our bid to bring residents closer to pristine environs of Western Suburb while still living in Luxury, we present The Midtown - a private retreat nestled in picturesque surroundings. These ultra-luxury residences are an exceptional opportunity to breathe the freshest air and enjoy stunning sunlight without giving up the pleasures of contemporary urban living.







THE  
MIDTOWN





WALKING TRACK



*Unbelievable reality*

MULTI-SPORTS COURT

The Sky Club, at The Midtown - is one of Nalasopara's largest multilevel clubs that houses all you could want from sports and recreational facilities to leisure and lifestyle. It's not an ordinary club. It's a spectacle, a work of art that will leave you awe-struck every time you set foot in it. Whether you want to play your favourite sport or step out with your loved ones for a great time or simply take a break from the kids and enjoy a movie at indoor theatre, The Midtown is the ultimate destination for you and those dear to you! It aspires to create a world where everyone is welcome to celebrate, play, laugh and create memories together.





## *Pray and Meditate*

An ideal place to pray and meditate in peace, the beautiful temple is more than an eye-catcher; it lends a sacred atmosphere to the entire place.

Immerse in clear, pristine beauty, unwind and relax with fitness, yoga at the meditation lawn.

### YOGA & MEDITATION LAWN





Nature is consecrated with every designed element, infusing landscape into architecture, interiors and lifestyle.

Imagine a home where you have an open sky, chirping of birds, greenery all around, a wide terrace where one can create memorable evenings spent with family and friends amidst a terrace garden that you can plan and execute at your own will. A space that gives you a holiday like ambience life long.

The Midtown gives you an outdoor living in your own space.



CHILDREN'S OPEN PLAY AREA



THE **MIDTOWN**  
NALASOPARA - W

Give your children the space to interact in the children's play area. The Midtown brings all the premium sporting, clubbing, leisure facilities and world class amenities well within reach of a select few.





MINI THEATRE

With wellness at its core, the state-of-the-art Sky Club - A Multi Level Clubhouse and a Turf offers you the best in fitness and rejuvenation. Keep your body, mind and spirit in balance all day. Our outdoor and indoor activities give you an engaging environment where the mind and body can unravel life's mysteries.



ONE OF NALASOPARA'S  
LARGEST MULTILEVEL CLUBS



MULTIPLE SPACES FOR LARGE  
AND SMALL SIT-DOWNS



LARGE AND CAPTIVATING  
LOBBY



REMARKABLE  
VIEWS



20,000+ SQ.FT. OF AMENITIES  
25 + AMENITIES



GAMES ROOM

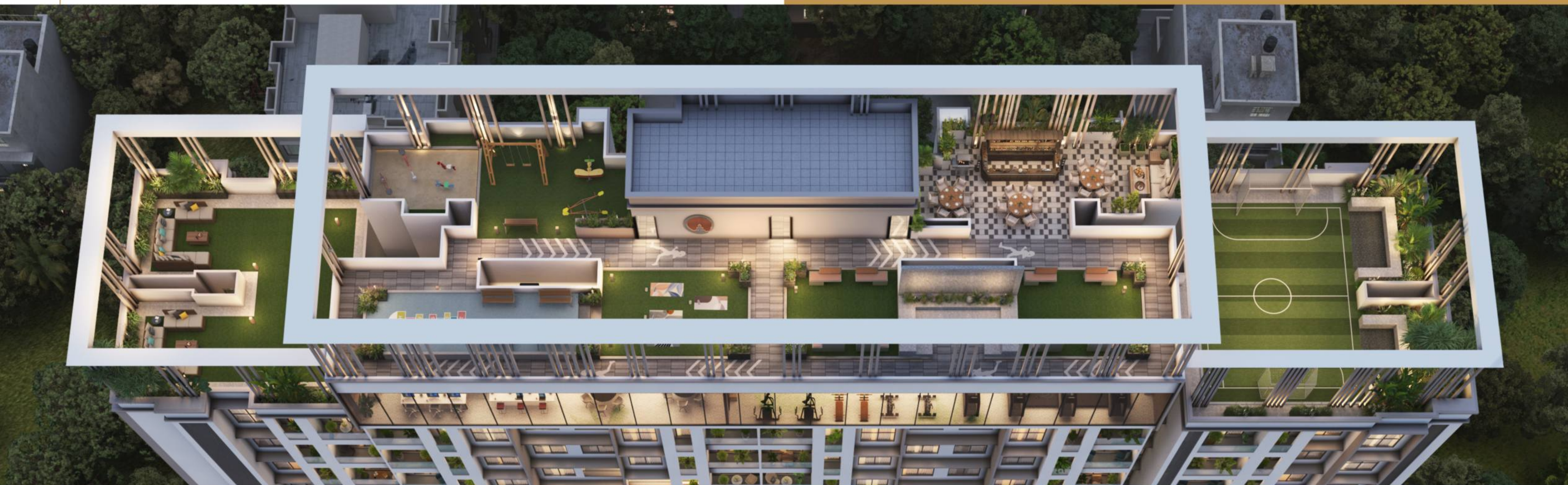


GYMNASIUM



## SKY CLUB

### Multilevel Club House



#### RECREATION FLOOR PLAN



##### GAMES ROOM

- Chess
- Pool Table
- Carrom Board
- Table Tennis
- Board Games

##### MULTI SPORT AREA

- Box Cricket
- Football
- Basket Ball



##### BUSINESS LOUNGE

- Business Conference Area
- Meeting Room
- Private Tuition Room
- Library

##### GYMNASIUM FITNESS ZONE

- With World Class Gym Equipment
- Skit Free Rubber Flooring

##### BANQUET HALL

- Indoor & Outdoor Celebration Space.

##### PERFORMANCE CENTRE

- Mini Theatre
- Music Room

#### TERRACE FLOOR PLAN



- Yoga & Meditation Lawn
- Acupressure Pathway
- Walking / Fitness Track
- Sunset Lounge
- Amphitheatre
- Senior Citizen Corner



##### KIDS PLAY AREA

- Swing Set
- Seesaw
- Slides For Kids
- Sandpit For Kids
- Hopscotch
- Jungle Gym

##### ROOFTOP

- Star Gazing
- Barbeque Deck
- Temple on Rooftop





## *Live the elevated life*

Experience a magical medley of inspiration and architecture; enjoy a synergy of masterful design and modern luxury. It's a masterpiece crafted for those charismatic few who pull only masterstrokes... discover the lifestyle of your dreams.

Enter your overwhelmingly lavish private retreat. At The Midtown, you don't live; you rule.





THE **M**DTOWN  
NALASOPARA - W





#### 4 BHK

FLAT NO. 3

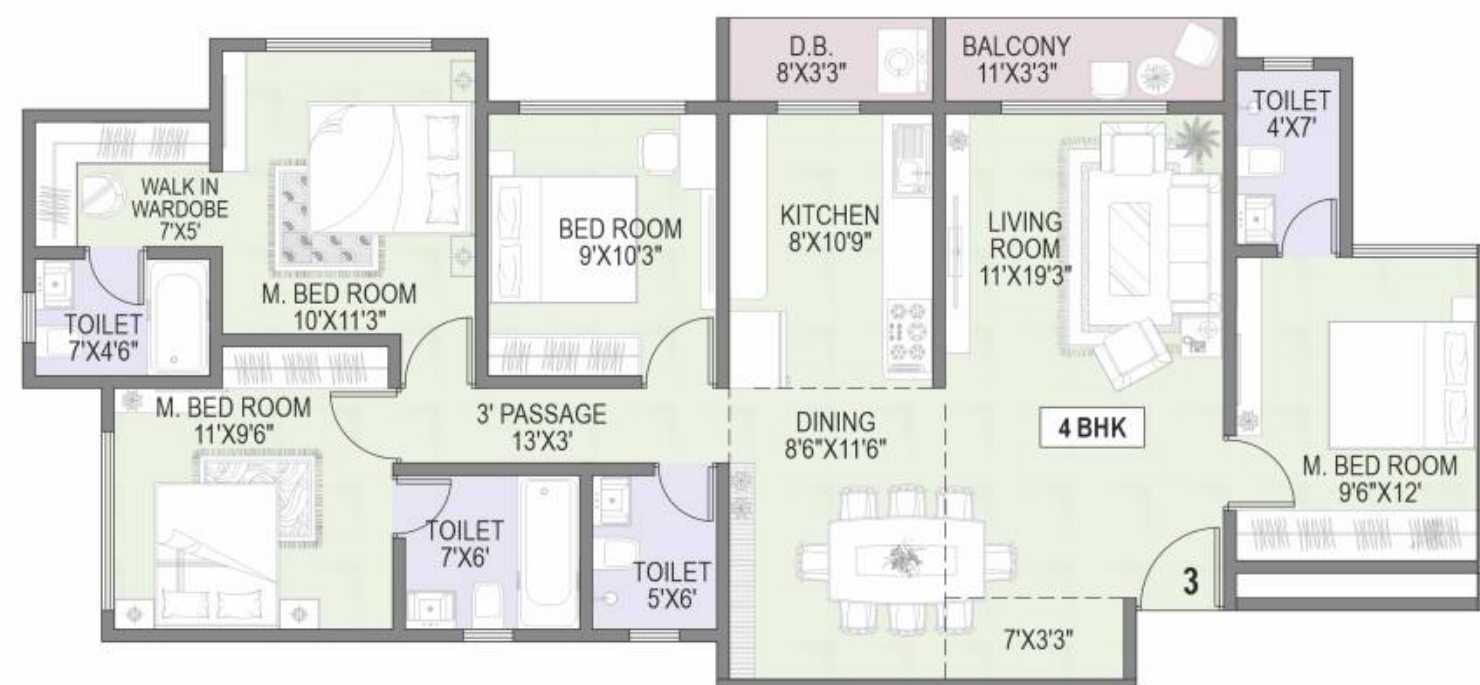
USABLE CA - 1200 SQ.FT.  
(RERA CA - 1138 + BAL. + D.B. - 62)



#### 3 BHK

FLAT NO. 2

USABLE CA - 1011 SQ.FT.  
(RERA CA + ENC. BAL. - 951  
BAL. + D.B. - 60)



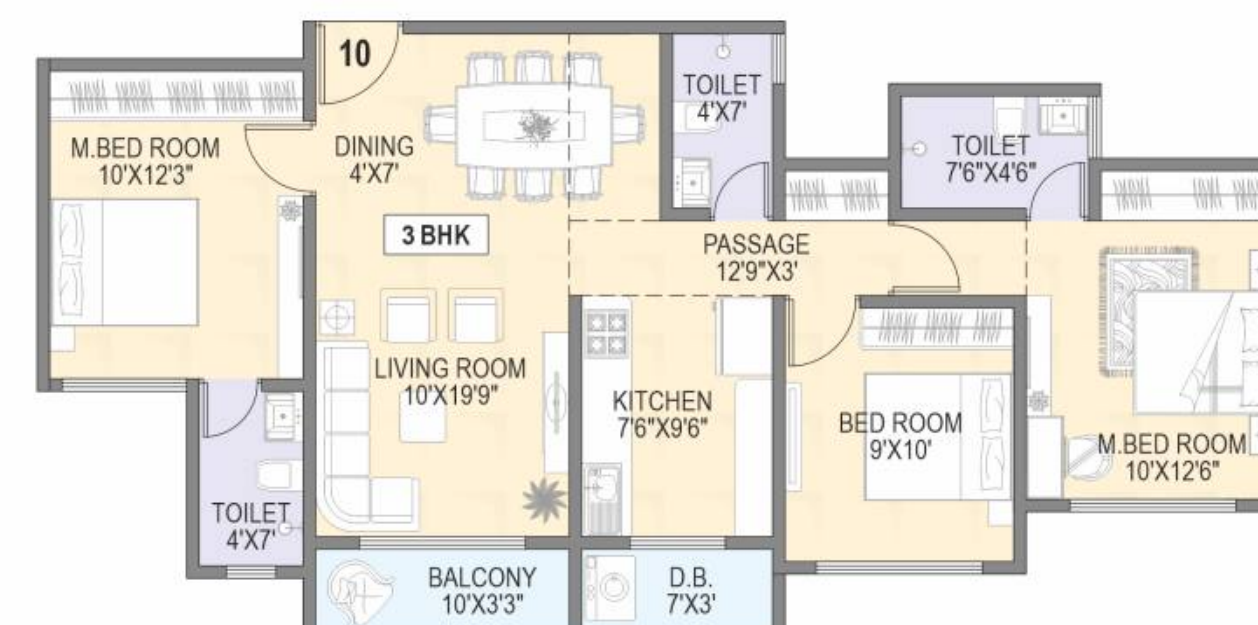




**3 BHK**  
**FLAT NO. 9**  
**USABLE CA - 982 SQ.FT.**  
 (RERA CA + ENC. BAL. - 924  
 BAL. + D.B. - 58)



**3 BHK**  
**FLAT NO. 10**  
**USABLE CA - 893 SQ.FT.**  
 (RERA CA - 835 • BAL. + D.B. - 58)







**2 BHK**  
**FLAT NO. 4**  
**USABLE CA - 674 SQ.FT.**  
**(RERA CA - 620 + BAL. + D.B. - 54)**

**VIRAR - NALASOPARA LINK ROAD**



**TYPICAL FLOOR PLAN**



10'4" CEILING HEIGHT



DG BACKUP



VALET PARKING



ELECTRIC CAR  
CHARGING STATION

## AMENITIES

- LIVING/DINING HALL**  
 Flooring: Vitrified flooring  
 Main Door: Laminated wooden flush door  
 Ceiling : False ceiling in living room
- BEDROOMS**  
 Flooring: Vitrified flooring  
 Doors: Laminated wooden flush door  
 Adequate electrical points provided for AC, fan, light, and TV connection  
 Windows/Railings
- FLOWER BED/DRYING BALCONY**  
 Flooring: Rough textured ceramic tiles  
 Railing: MS Railing with synthetic enamel paint finish
- POCKET TERRACES**  
 Flooring: Rough textured ceramic tiles  
 Railing: Glass railing
- TOILETS**  
 Flooring: Rough textured ceramic tiles  
 Premium Sanitary fittings & fixtures  
 Doors: Laminated wooden flush door  
 Provision for exhaust fan and instant geyser  
 Loft with Tank
- KITCHEN**  
 Flooring: Vitrified flooring  
 Modular Kitchen cabinet  
 Kitchen counter: Granite platform  
 Provision for washing machine & cloth drying in dry balcony area





Proposed Extension  
of Coastal road up  
to Vasai - Virar region.



Mumbai - Ahmedabad  
Bullet Train through  
Vasai - Virar region.



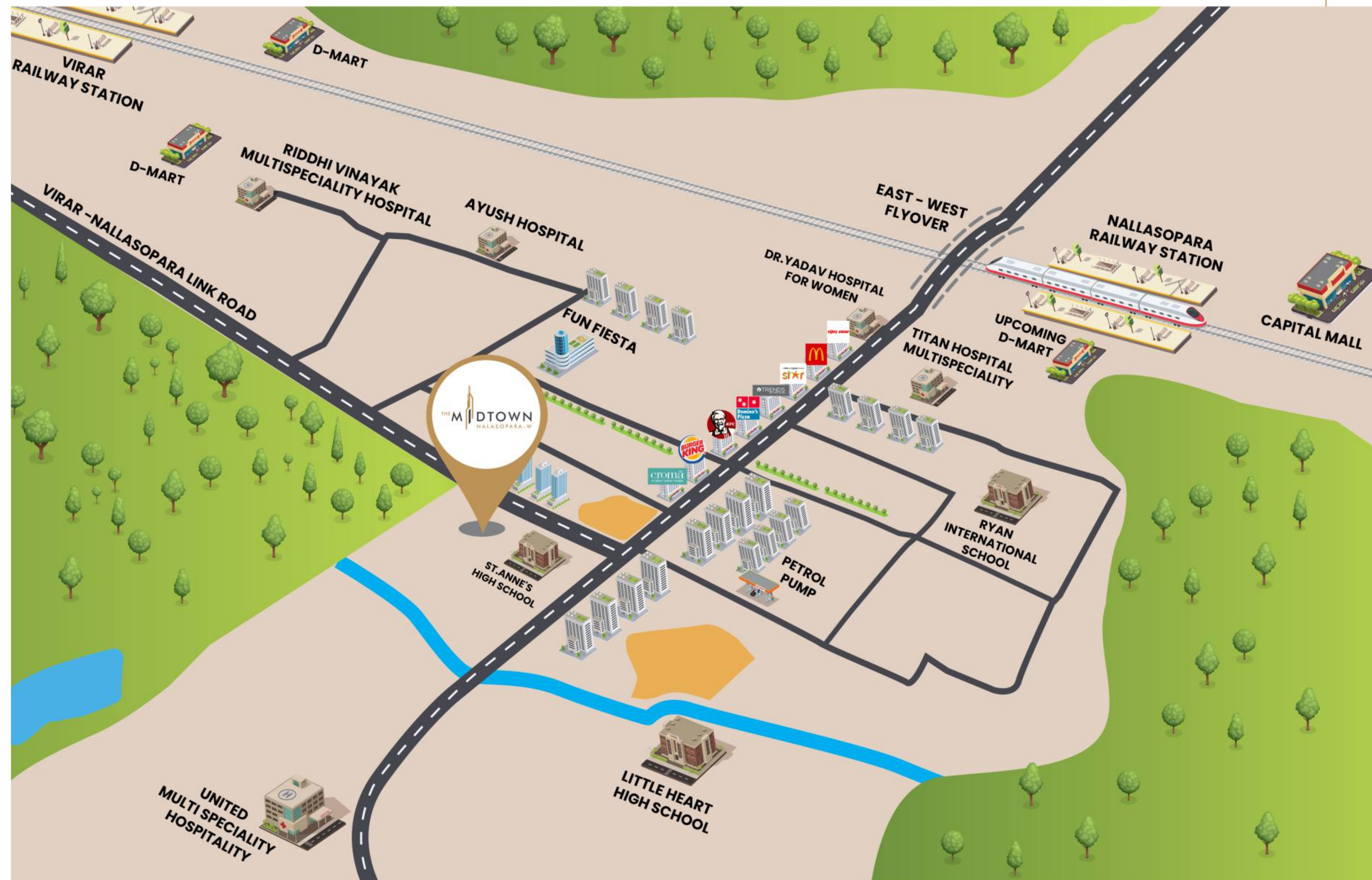
Proposed Metro  
line - 13  
Virar - Bhayander.



Proposed Elevated  
Western Railway Corridor  
from Churchgate to Virar.



Virar - Panvel,  
Alibaug Multi-modal  
Corridor.





The residences at The Midtown are beautifully tucked away from the madness of the city. Yet, they are close to every need you wish attended to. Strategically located on Nalasopara Virar Link Road and in close proximity to the Station Road, these residences give you immediate access to the best Nalasopara has to offer. From the best options in retail and commercial developments to schools, a bustling office hub, hospitals, colleges and world class recreational options.







## THE TEAM BEHIND THE VISION



Site : The Midtown, Virar Nalasopara Link Road, Near St. Anne's High School,  
Sri Prastha Complex, Nalasopara West, Palghar - 401203.

**Sales : +91-800 7777 080**

Email : [info@innovisionestates.com](mailto:info@innovisionestates.com) • Web.: [www.themidtown.in](http://www.themidtown.in)

MAHARERA  
P99000051784  
[maharera.t.mahaonline.gov.in](http://maharera.t.mahaonline.gov.in)

Project Architect  
Megha Urbanscapes

Design Consultant  
Studio 602

RCC Consultant  
Techflow Consulting  
Engineers

MEP Consultant  
Engineering Virtual Built  
Consultants Pvt. Ltd.

PROJECT APPROVED BY  
ALL MAJOR BANK'S & NBFC'S



Note : The information in this brochure is indicative of the kind of development that is proposed. It is prepared and issued in good faith and is for guidance only. It does not constitute part of any offer or contract. It is subject to the approval from the respective authorities. In the interest of the continuing improvement of the project and or any changes as suggested by the authorities or the Developers reserve the right to alter the Layout, Plans, Specifications, Amenities or features of the building/s without any prior notice or obligation to any buyer's in the project. The photographs and the artists impressions in the brochure are for reference only. All the amenities provided subject to approval of Competent Authority.



